

# BOEN gradings

Visit our virtual product finder to get a better impression of the gradings.

[boen.com/products](https://boen.com/products)

*Wood is a natural product. Some types of wood – beech, for example – have a relatively calm grain. Others, like oak, are rich in structure, with a spectrum of calm to rustic. We offer a wide selection for you to choose from.*



## CALM

Consistent growth; only small knots; standing or lying year rings.



## LIVELY

Natural grading with small to medium knots; a limited spectrum of colours due to sapwood.



## RUSTIC

Structure and vivid growth; larger knots; sapwood and heartwood; a rich spectrum of colours.

	CALM	LIVELY	RUSTIC
<i>Select</i>	██████████		
<i>Adagio, Andante, Nature</i>	██████████		
<i>Finale, Concerto, Contract, Basic</i>		██████████	
<i>Animoso, Bellevue, Country, Vivace, Rustic, Traditional</i>		██████████	██████████
<i>Marcato, Baltic</i>			██████████
<i>Vivo, Canyon</i>			██████████
<i>Espressivo</i>			██████████

Planks, Finesse and Maxi are graded according to EN13489, free class (Boen class).  
Longstrip, Prestige and Traffic are graded according to ○, △ and □ after EN13489.

**Wood is a product of nature** – each tree has its own structure and individual colour combination. An image or a sample will therefore never be able to give you a complete picture of the finished floor. Please also note that the colour may change when exposed to light. As a guideline, darker wood species will get a more golden tone, whereas lighter species will become slightly darker. Cracked knots are filled with putty, so small gaps between the putty and wood may appear.

# Espressivo

## Grading explanation



### Knots, permitted:

- ▶ Cracked knots unlimited in diam.
- ▶ Solid (healthy) knots unlimited in diam.
- ▶ Knots hollow (filled) up to 9 x 5cm
- ▶ Knots on the edge
- ▶ Continuous splits or ingrowing bark, max. 25mm in width, length unlimited
- ▶ Smaller splits
- ▶ Solid pith



### Sapwood/ Color variations permitted:

- ▶ Size unlimited



### Color differences permitted:

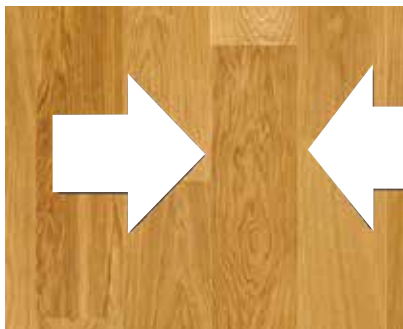
- ▶ All kinds of color variation
- ▶ Occasional white watermarks
- ▶ Dark ends

### Wood structure permitted:

- ▶ Mirror / pith grain
- ▶ Quartersawn and riftsawn board texture
- ▶ Insect holes (up to 1/2 board length)

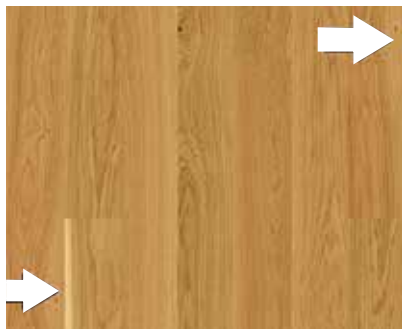
# General

## *Oak characteristics*



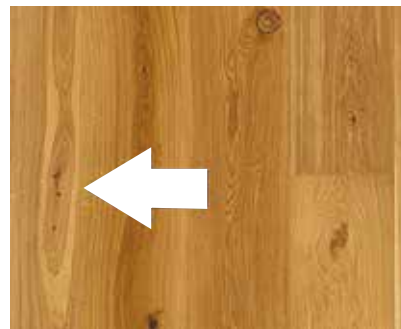
**Key Characteristics:**

- ▶ Quartersawn and riftsawn board texture



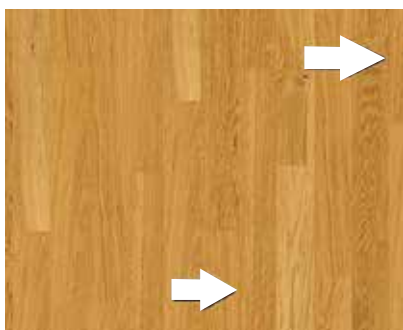
**Key Characteristics:**

- ▶ Sapwood



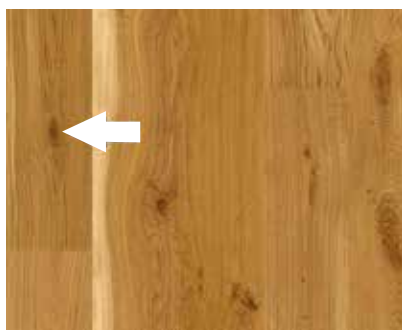
**Key Characteristics:**

- ▶ Moon rings



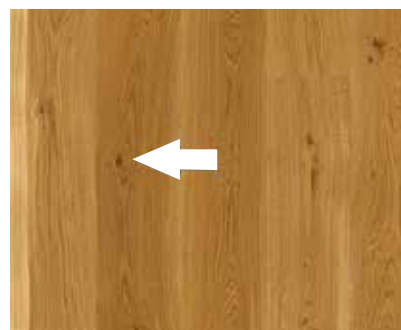
**Key Characteristics:**

- ▶ Mirrors



**Key Characteristics:**

- ▶ Knots, sound and intergrown



**Key Characteristics:**

- ▶ Splay knots and dead (not intergrown) knots



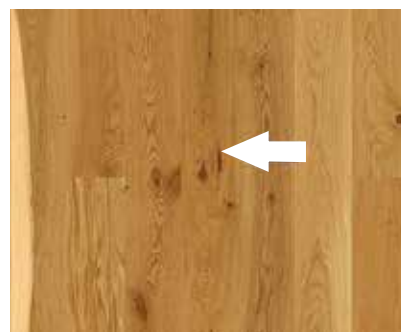
**Key Characteristics:**

- ▶ Cracked knots



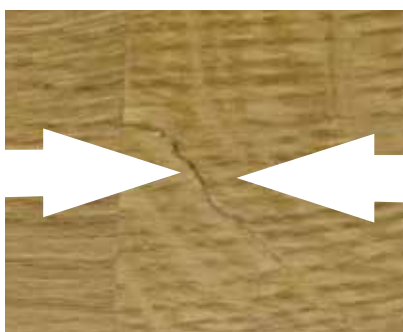
**Key Characteristics:**

- ▶ Cat spots



**Key Characteristics:**

- ▶ Ingrowing bark



**Key Characteristics:**

- ▶ Lightning shake